



DHANRAJ BAID JAIN COLLEGE

(AUTONOMOUS)

(OWNED AND MANAGED BY TAMILNADU EDUCATIONAL AND MEDICAL FOUNDATION)

STUDENT SATISFACTION SURVEY

2019 - 20

Online Student Satisfaction Survey

Analysis Report (2019-20)

Student Satisfactory Survey with questionnaire proposed by the NAAC is collected online every academic year. This questionnaire consists of 20 questions and 3 Suggestions which focuses on the teaching – learning, evaluation process and infrastructure of the institution. All questions are mandatory.

The students are the most important stakeholders of the institute. Their views or suggestions help the institute in formulating effective learning and teaching practices. They are considered as prime data to evaluate and enhance teaching–learning, mentoring and other processes supporting overall development of the students thereby attaining the expected outcomes.

The questionnaire has been analyzed based on a 5-point scale. Automated analysis report for the responses is generated which helps to ensure a quality profile in relation to the institutional vision. The results thus enable the college to adopt quality all arenas.

The results represent the opinion of students who participated in the survey. The identity of the student is maintained confidential to ensure genuineness of responses.

Overall Analysis of the Student Satisfaction Survey

The graphs represent the different views expressed by the students in regard to their perception of quality in the institution. On an average students are satisfied with the teaching methodology and facilities available at our institute.

Online Student Satisfaction Survey - Questionnaire

1 How much of the syllabus was covered in the class?

- 4 - 85 to 100%
- 3 - 70 to 85%
- 2 - 55 to 69%
- 1 - 30 to 54%
- 0 - Below 30%

2 How well did the teachers prepare for the classes?

- 4 - Thoroughly
- 3 - Satisfactorily
- 2 - Poorly
- 1 - Indifferently
- 0 - will not teach at all

3 How well were the teachers able to communicate?

- 4** - Always effective
- 3 - Sometimes effective
- 2 - Just satisfactorily
- 1 - Generally ineffective
- 0 - Very poor communication

4 The teachers approach to teaching can best be described as

- 4 - Excellent
- 3 - Very Good
- 2 - Good
- 1 - Fair
- 0 - Poor

5 Fairness of the internal evaluation process by the teachers

- 4 - Always fair
- 3 - Usually fair
- 2 - Sometimes unfair
- 1 - Usually unfair
- 0 - Unfair

6 Was your performance in assignments discussed with you?

- 4 - Every time
- 3 - Usually
- 2 - Occasionally/Sometimes
- 1 - Rarely
- 0 - Never

7 The college takes active interest in promoting internship, student exchange, field visit opportunities for students

- 4 - Regularly
- 3 - Often
- 2 - Sometimes
- 1 - Rarely
- 0 - Never

8 The teaching and mentoring process in your institution facilitates you in cognitive, social and emotional growth

- 4 - Significantly
- 3 - Very well
- 2 - Moderately
- 1 - Marginally
- 0 - Not at all

9 The institution provides multiple opportunities to learn and grow

- 4 - Strongly agree
- 3 - Agree
- 2 - Neutral
- 1 - Disagree
- 0 - Strongly disagree

- 10 Teachers inform you about your expected competencies, course outcomes and programme outcomes
- 4 - Every time
 - 3 - Usually
 - 2 - Occasionally/Sometimes
 - 1 - Rarely
 - 0 - Never
- 11 Your mentor does a necessary follow-up with an assigned task to you
- 4 - Every time
 - 3 - Usually
 - 2 - Occasionally/Sometimes
 - 1 - Rarely
 - 0 - I do not have a mentor
- 12 The teachers illustrate the concepts through examples and applications
- 4 - Every time
 - 3 - Usually
 - 2 - Occasionally/Sometimes
 - 1 - Rarely
 - 0 - Never
- 13 The teachers identify your strengths and encourage you with providing right level of challenges
- 4 - Fully
 - 3 - Reasonably
 - 2 - Partially
 - 1 - Slightly
 - 0 - Unable to
- 14 Teachers are able to identify your weakness and help you to overcome them
- 4 - Every time
 - 3 - Usually
 - 2 - Occasionally / Sometimes
 - 1 - Rarely
 - 0 - Never

- 15 The institution makes effort to engage students in the monitoring, review and continuous quality improvement of the teaching learning process
- 4 - Strongly agree
 - 3 - Agree
 - 2 - Neutral
 - 1 - Disagree
 - 0 - Strongly disagree
- 16 The institute/teachers use student centric methods, such as experimental learning, participative learning and problem solving methodologies for enhancing learning experiences
- 4 - To a great extent
 - 3 - Moderate
 - 2 - Some what
 - 1 - Very little
 - 0 - Not at all
- 17 Teachers encourage you to participate in extracurricular activities
- 4 - Strongly agree
 - 3 - Agree
 - 2 - Neutral
 - 1 - Disagree
 - 0 - Strongly disagree
- 18 Efforts are made by the institute/teachers to inculcate soft skills, life skills and employability skills to make you ready for the world of work
- 4 - To a great extent
 - 3 - Moderate
 - 2 - Some what
 - 1 - Very little
 - 0 - Not at all
- 19 What percentage of teachers use ICT tools such as LCD projector, Multimedia, etc. while teaching?
- 4 - Above 90%
 - 3 - 70-89%
 - 2 - 50-69%
 - 1 - 30-49%
 - 0 - Below 29%

20 The overall quality of teaching-learning process in your institute is very good :

4 - Strongly agree

3 - Agree

2 - Neutral

1 - Disagree

0 - Strong disagree

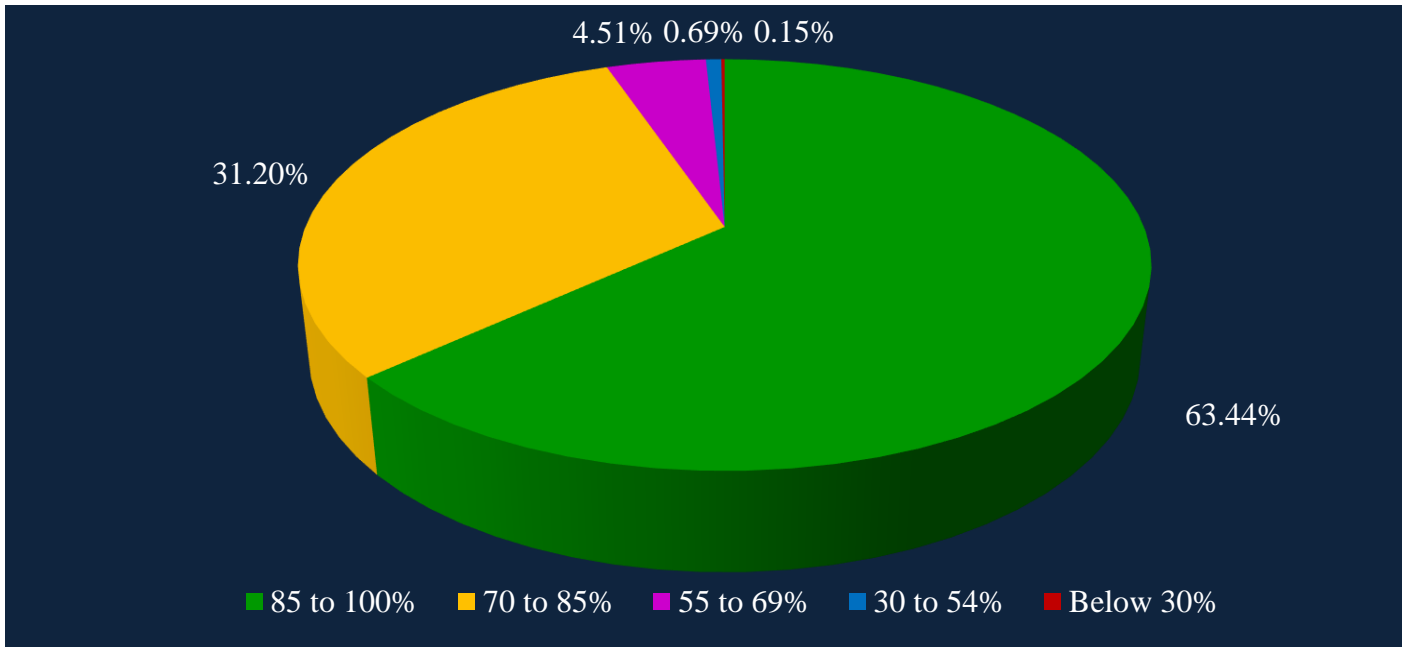
STUDENT SATISFACTION SURVEY REPORT (2019-20)

Total No. of Students Responded = 1818

Parameters	Students Response (In numbers)					Students Response (In Percentage)				
	4	3	2	1	0	4	3	2	1	0
SSS-1	1153	567	82	13	3	63.44	31.20	4.51	0.69	0.15
SSS-2	853	918	31	11	5	46.93	50.48	1.70	0.62	0.27
SSS-3	1090	585	126	14	4	59.93	32.16	6.90	0.77	0.23
SSS-4	775	737	262	38	6	42.65	40.53	14.42	2.08	0.31
SSS-5	949	700	149	11	9	52.22	38.49	8.18	0.62	0.50
SSS-6	841	701	208	48	21	46.24	38.57	11.42	2.62	1.16
SSS-7	847	508	285	113	66	46.59	27.92	15.66	6.21	3.63
SSS-8	653	846	269	38	12	35.94	46.51	14.81	2.08	0.66
SSS-9	804	771	215	20	8	44.23	42.38	11.80	1.12	0.46
SSS-10	839	742	200	29	8	46.12	40.84	10.99	1.58	0.46
SSS-11	848	734	179	40	18	46.63	40.38	9.83	2.20	0.96
SSS-12	925	696	156	34	6	50.91	38.30	8.60	1.89	0.31
SSS-13	895	671	182	53	18	49.21	36.91	9.99	2.93	0.96
SSS-14	850	664	199	70	34	46.78	36.52	10.95	3.86	1.89
SSS-15	785	773	224	31	5	43.15	42.54	12.34	1.70	0.27
SSS-16	813	781	170	40	13	44.74	42.96	9.37	2.20	0.73
SSS-17	930	692	160	29	7	51.14	38.06	8.79	1.62	0.39
SSS-18	852	776	130	51	8	46.86	42.69	7.17	2.82	0.46
SSS-19	676	663	263	111	105	37.18	36.44	14.46	6.13	5.78
SSS-20	872	756	164	22	4	47.98	41.57	9.02	1.20	0.23

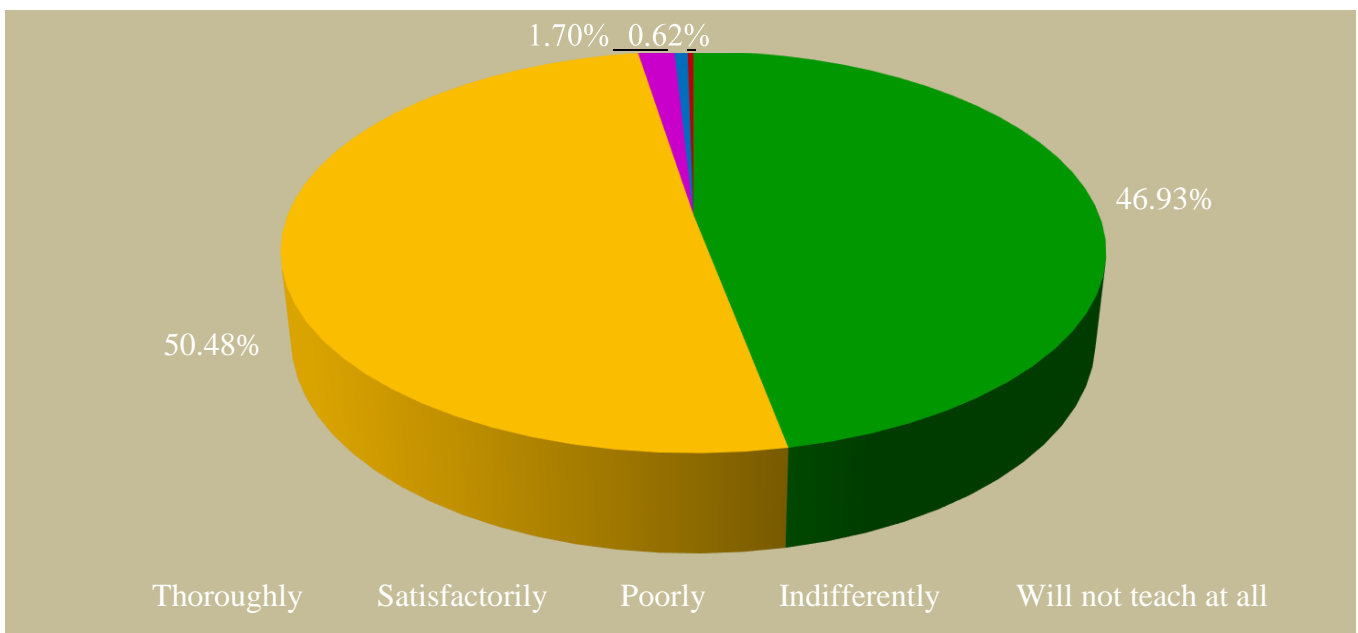
1. Syllabus coverage

85 to 100%	70 to 85%	55 to 69%	30 to 54%	Below 30%
63.44%	31.20%	4.51%	0.69%	0.15%



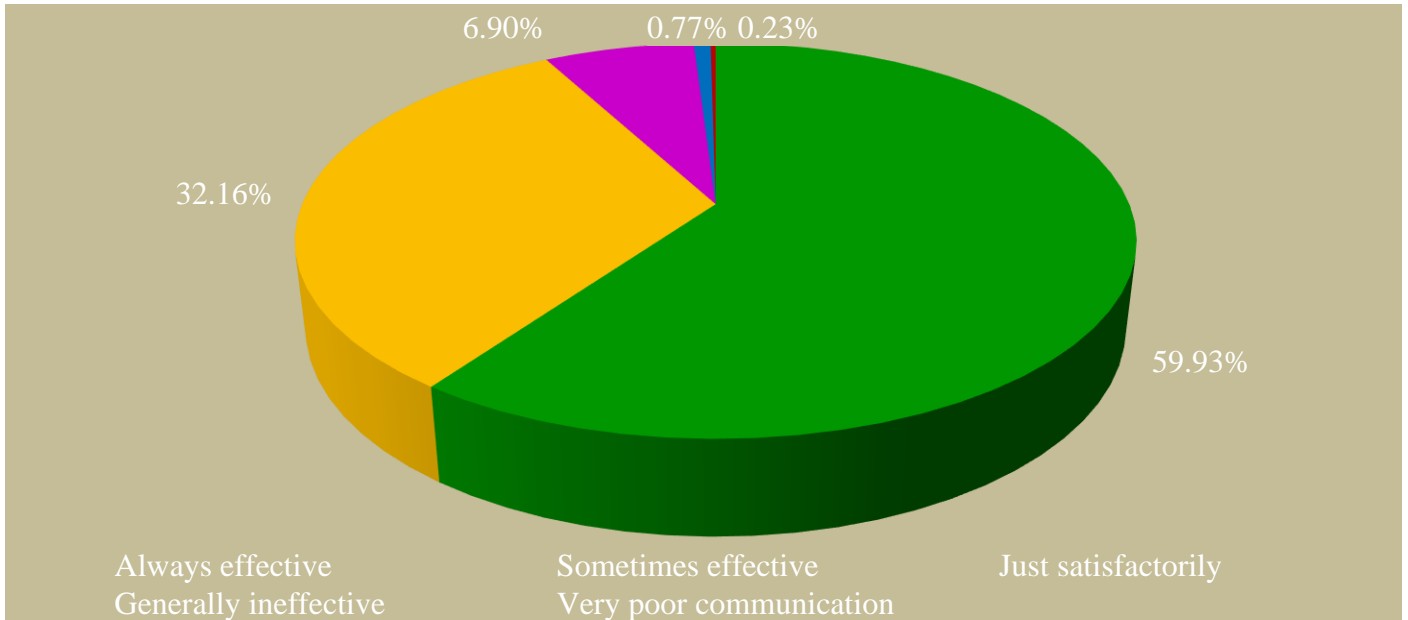
2. Teachers preparation for the classes

Thoroughly	Satisfactorily	Poorly	Indifferently	Will not teach at all
46.93%	50.48%	1.70%	0.62%	0.27%



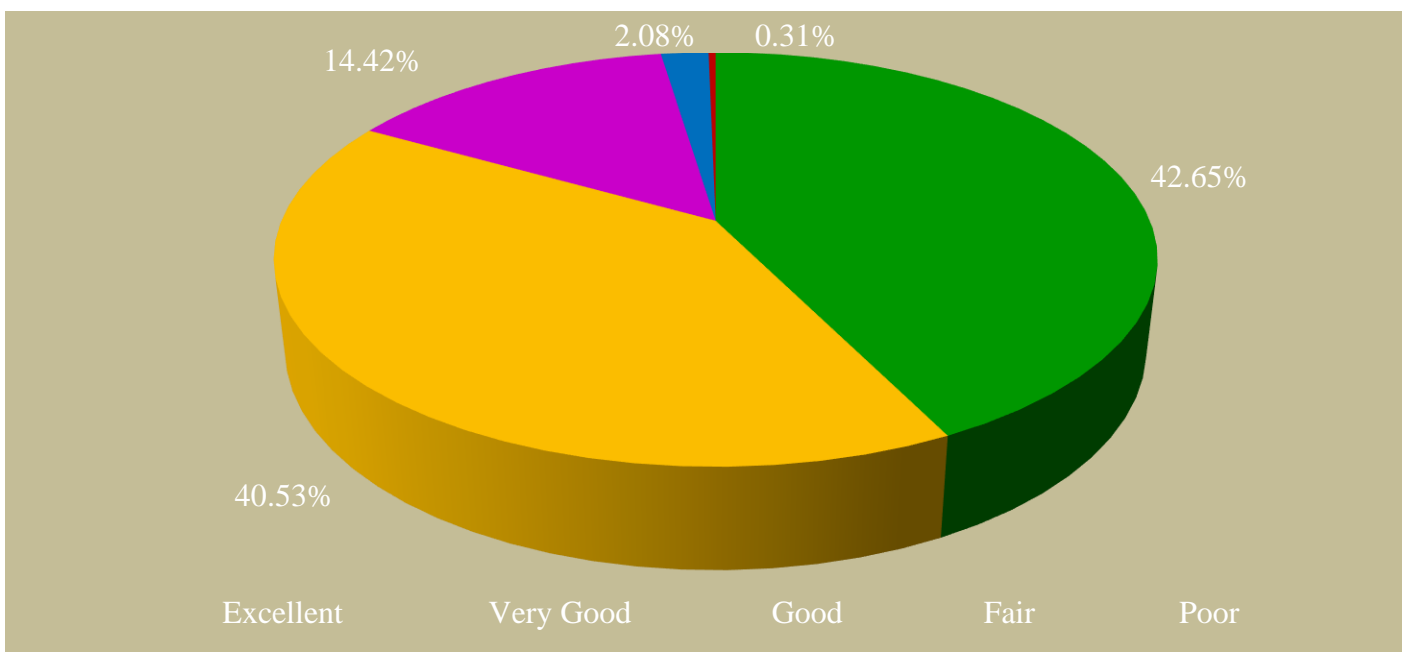
3. Teachers ability to communicate

Always effective	Sometimes effective	Just satisfactorily	Generally ineffective	Very poor communication
59.93%	32.16%	6.90%	0.77%	0.23%



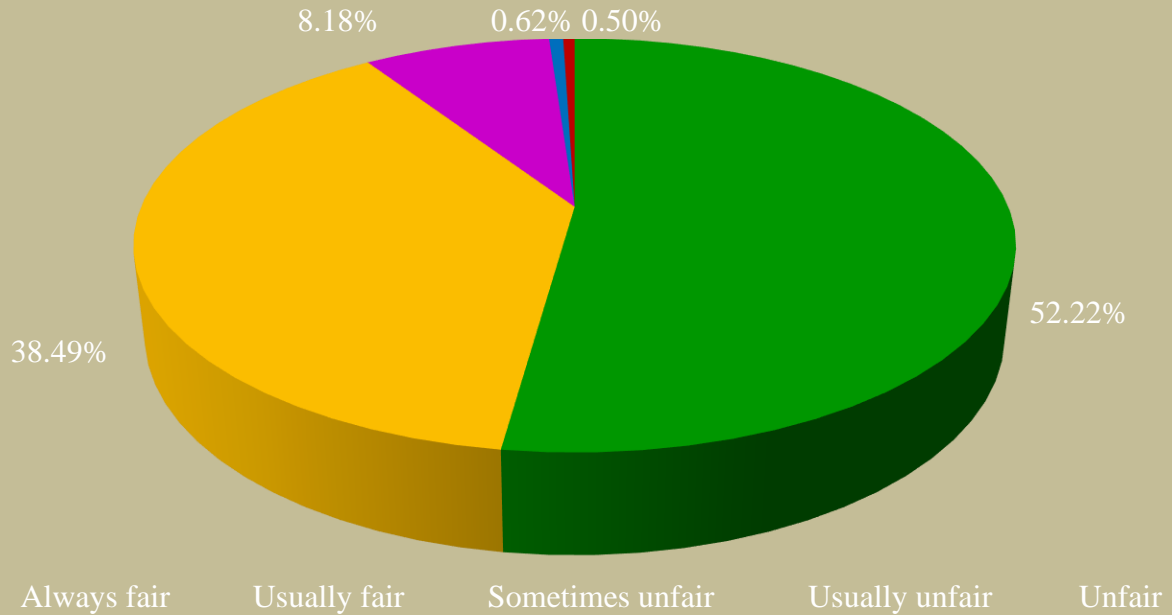
4. The teachers approach to teaching

Excellent	Very Good	Good	Fair	Poor
42.65%	40.53%	14.42%	2.08%	0.31%



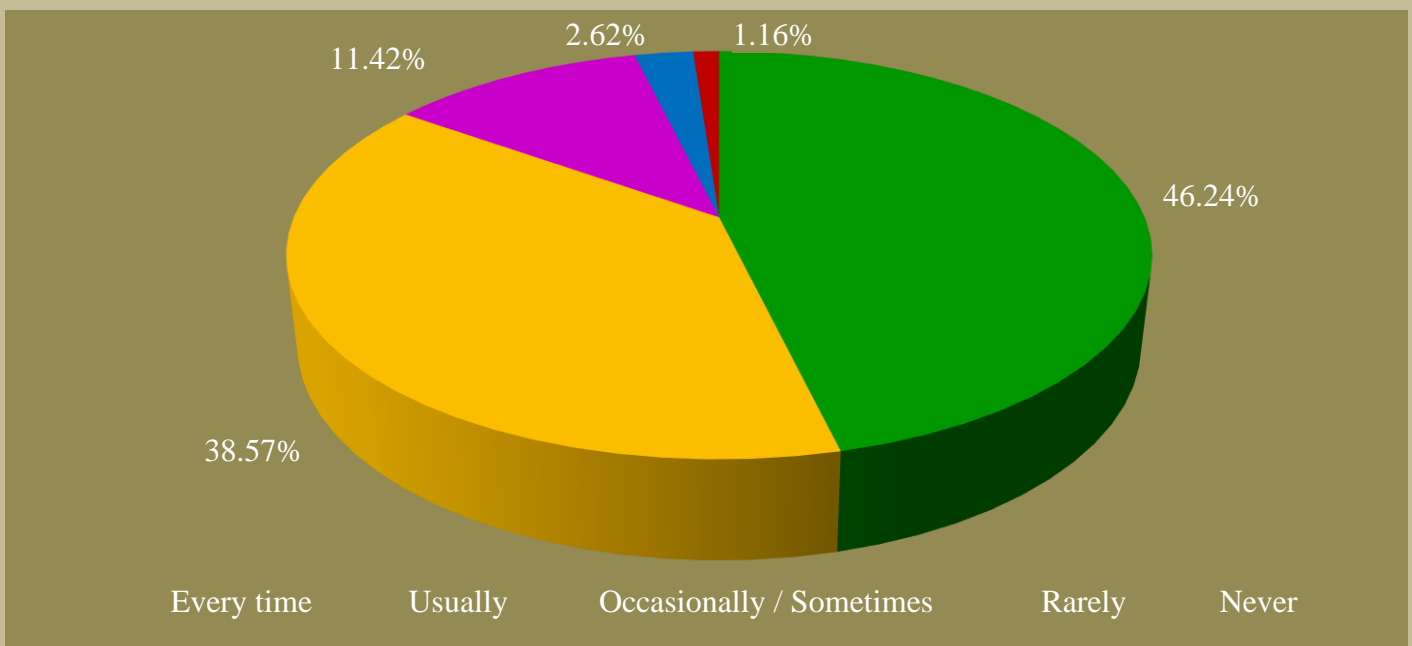
5. Fairness of the internal evaluation process

Always fair	Usually fair	Sometimes unfair	Usually unfair	Unfair
52.22%	38.49%	8.18%	0.62%	0.50%



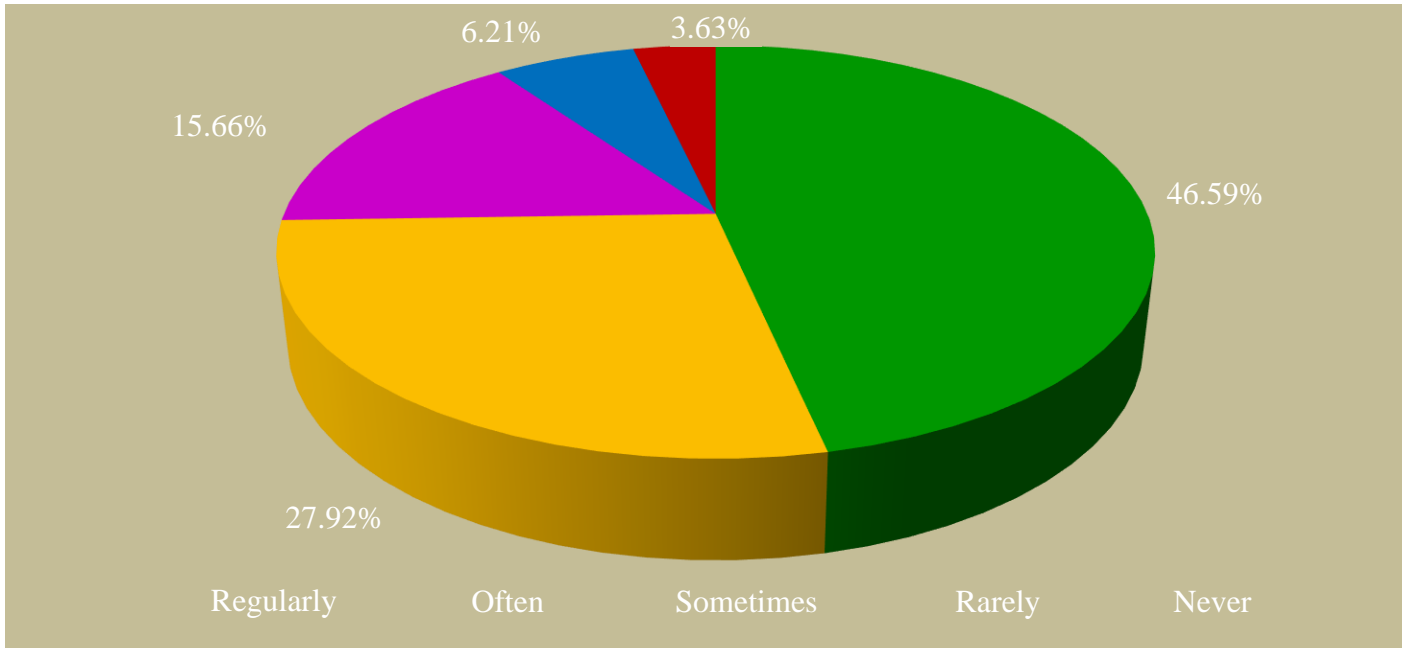
6. Evaluation of assignments

Every time	Usually	Occasionally / Sometimes	Rarely	Never
46.24%	38.57%	11.42%	2.62%	1.16%



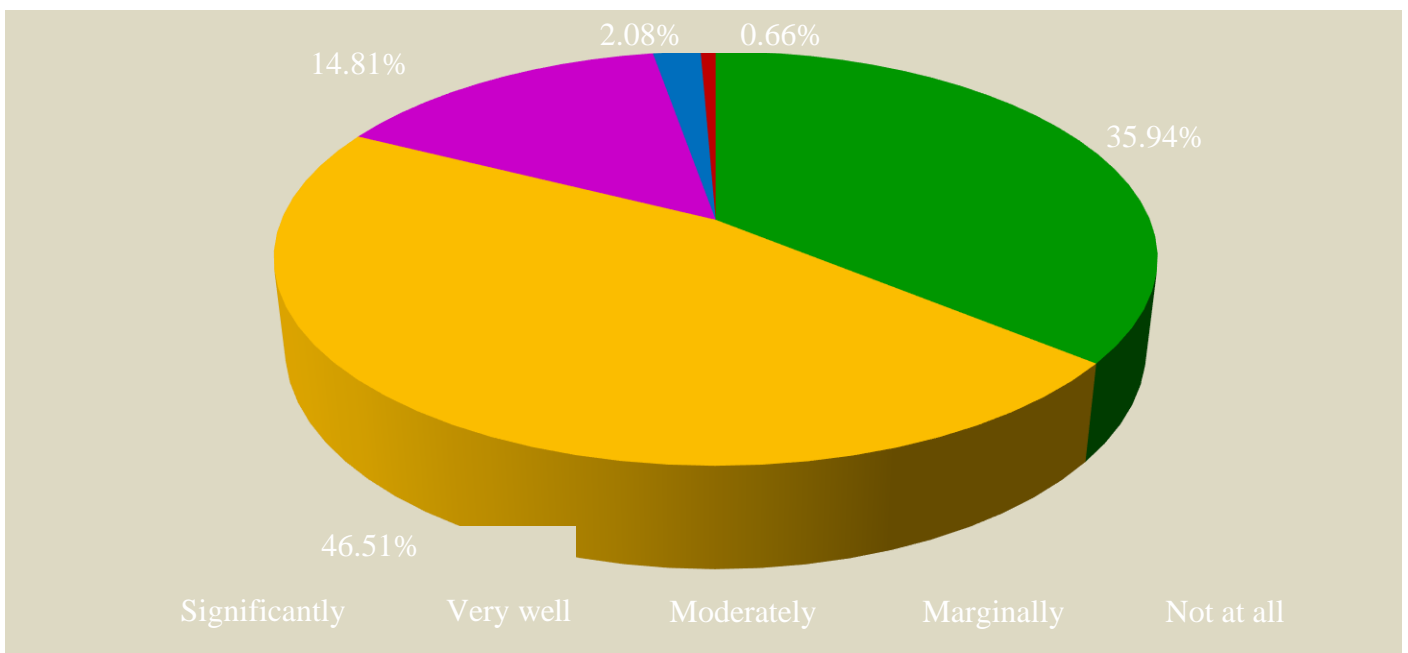
7. Promoting internship, student exchange, field visit opportunities for students

Regularly	Often	Sometimes	Rarely	Never
46.59%	27.92%	15.66%	6.21%	3.63%



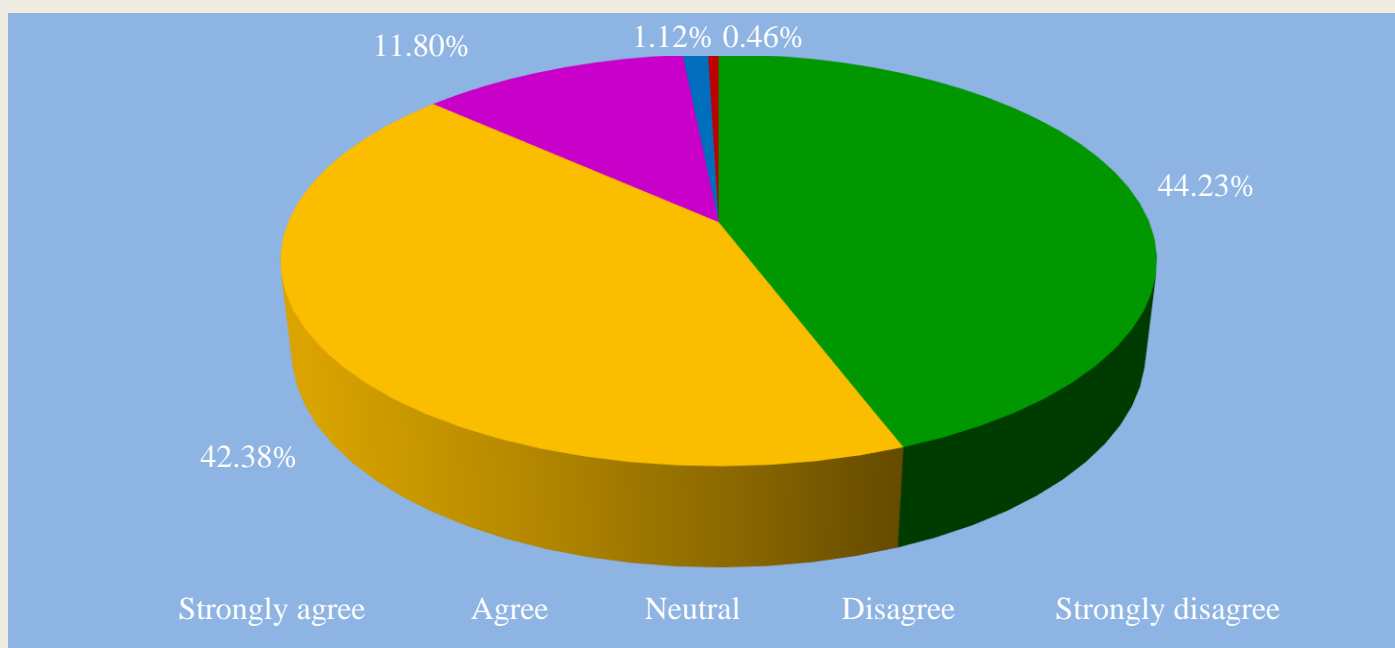
8. The teaching and mentoring process facilitates in cognitive, social and emotional growth

Significantly	Very well	Moderately	Marginally	Not at all
35.94%	46.51%	14.81%	2.08%	0.66%



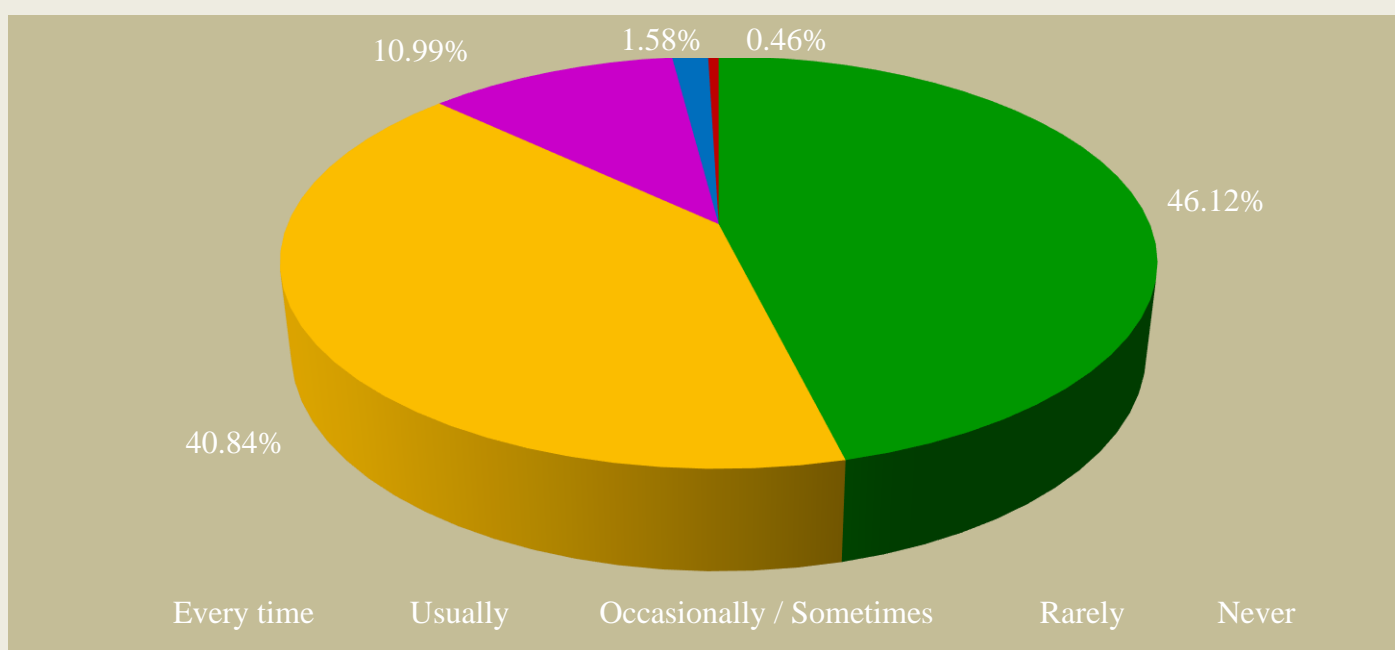
9. The institution provides multiple opportunities to learn and grow

Strongly agree	Agree	Neutral	Disagree	Strongly disagree
44.23%	42.38%	11.80%	1.12%	0.46%



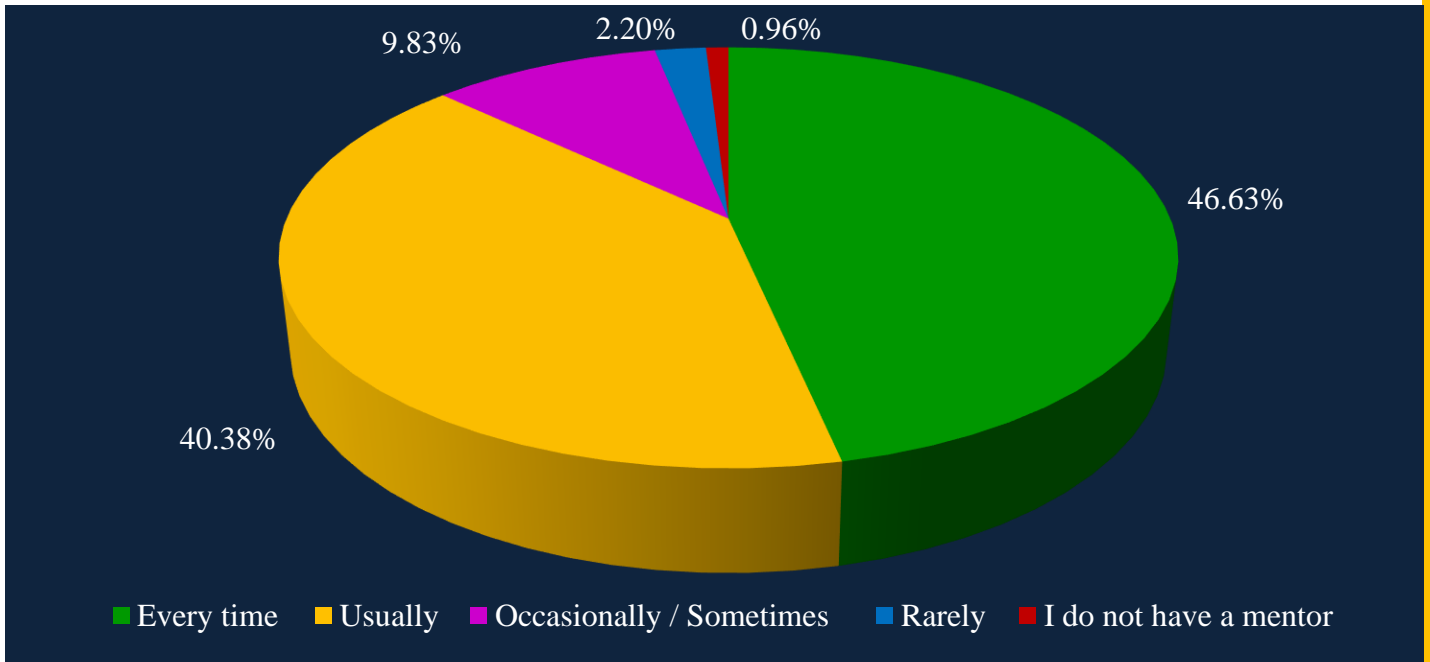
10. Teacher informs about expected competencies, course outcomes and programme outcomes

Every time	Usually	Occasionally / Sometimes	Rarely	Never
46.12%	40.84%	10.99%	1.58%	0.46%



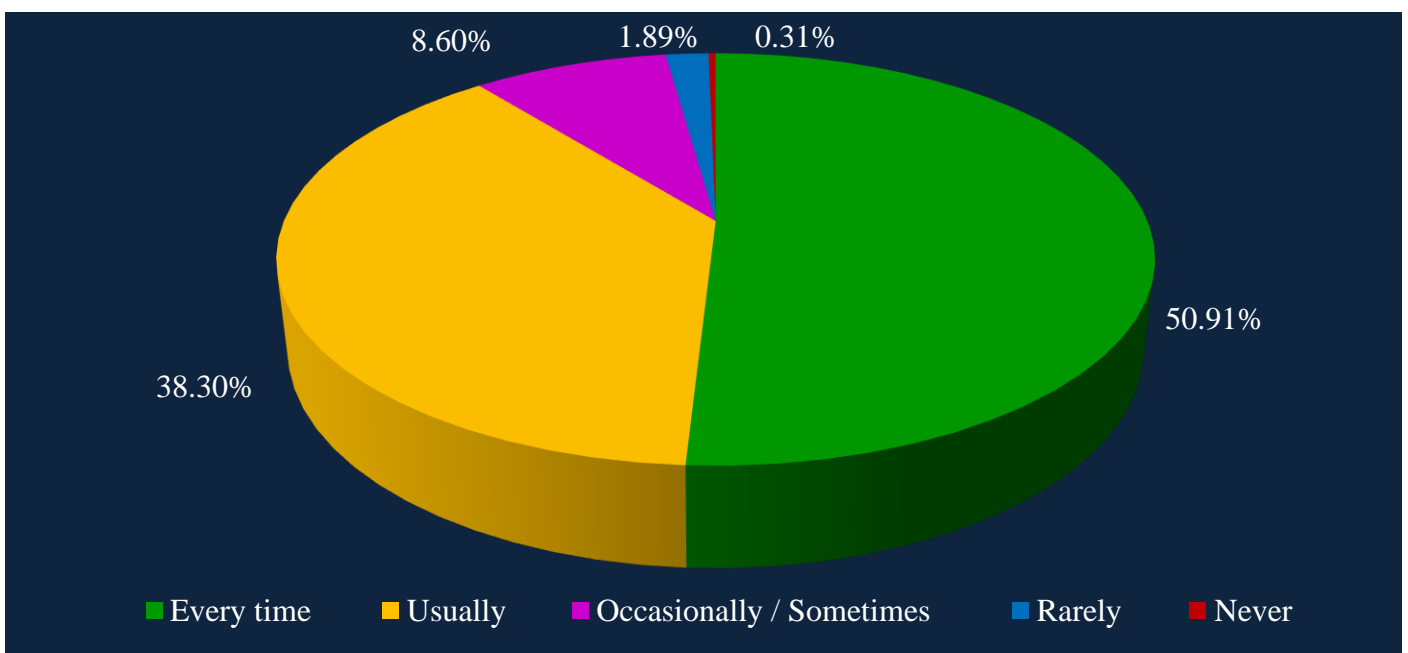
11. Mentor follow-up system

Every time	Usually	Occasionally / Sometimes	Rarely	I do not have a mentor
46.63%	40.38%	9.83%	2.20%	0.96%



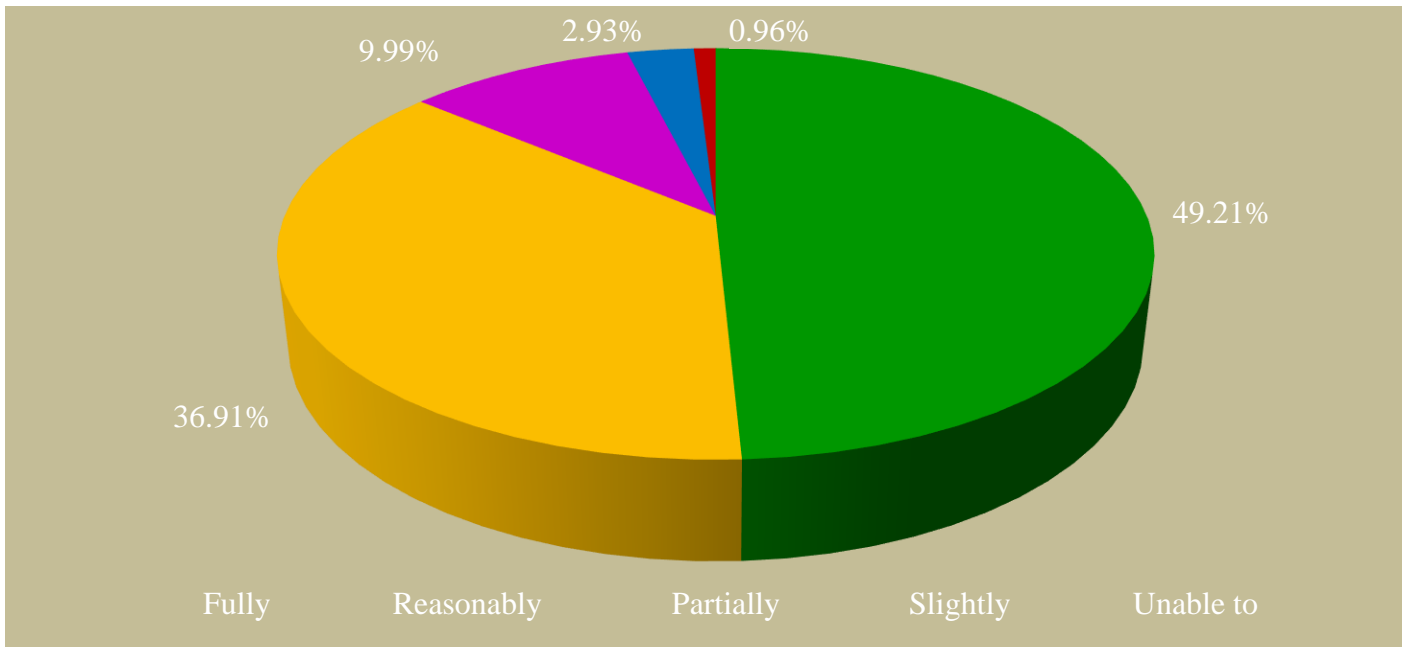
12. The teachers illustrate the concepts through examples and applications

Every time	Usually	Occasionally / Sometimes	Rarely	Never
50.91%	38.30%	8.60%	1.89%	0.31%



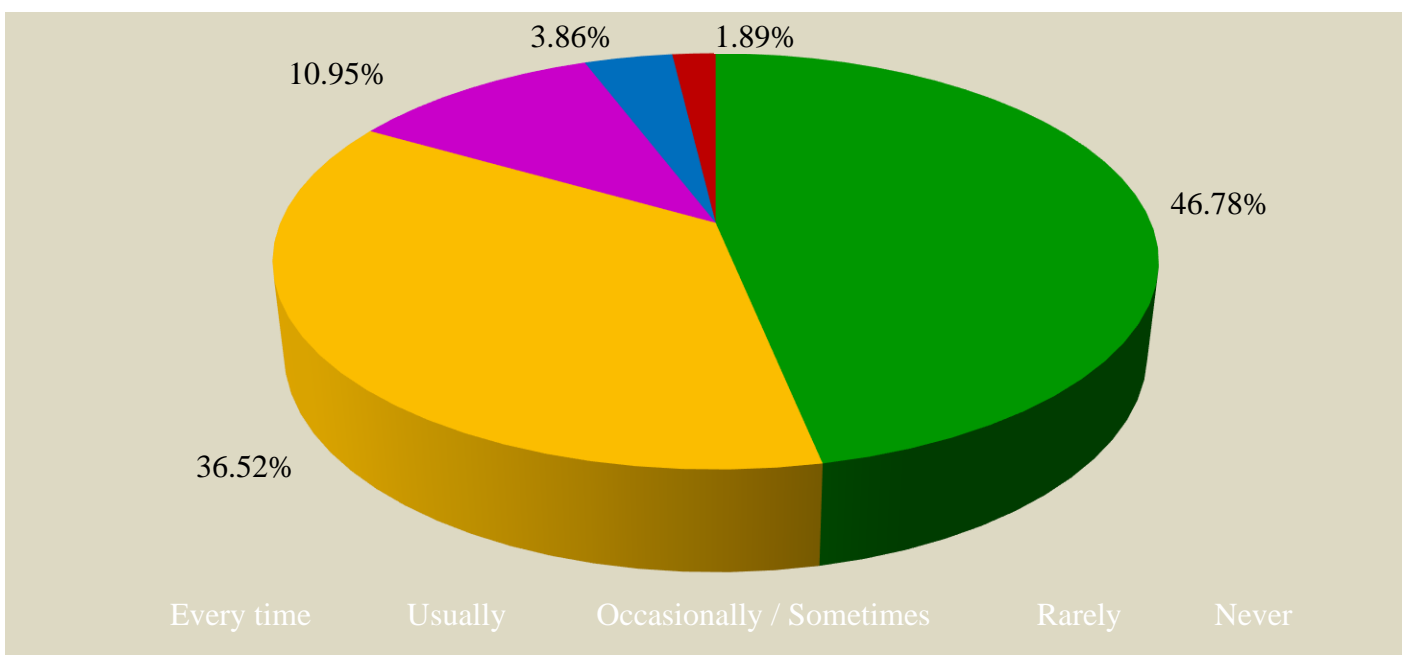
13. The teachers identify the strengths and encourage with providing right level of challenges

Fully	Reasonably	Partially	Slightly	Unable to
49.21%	36.91%	9.99%	2.93%	0.96%



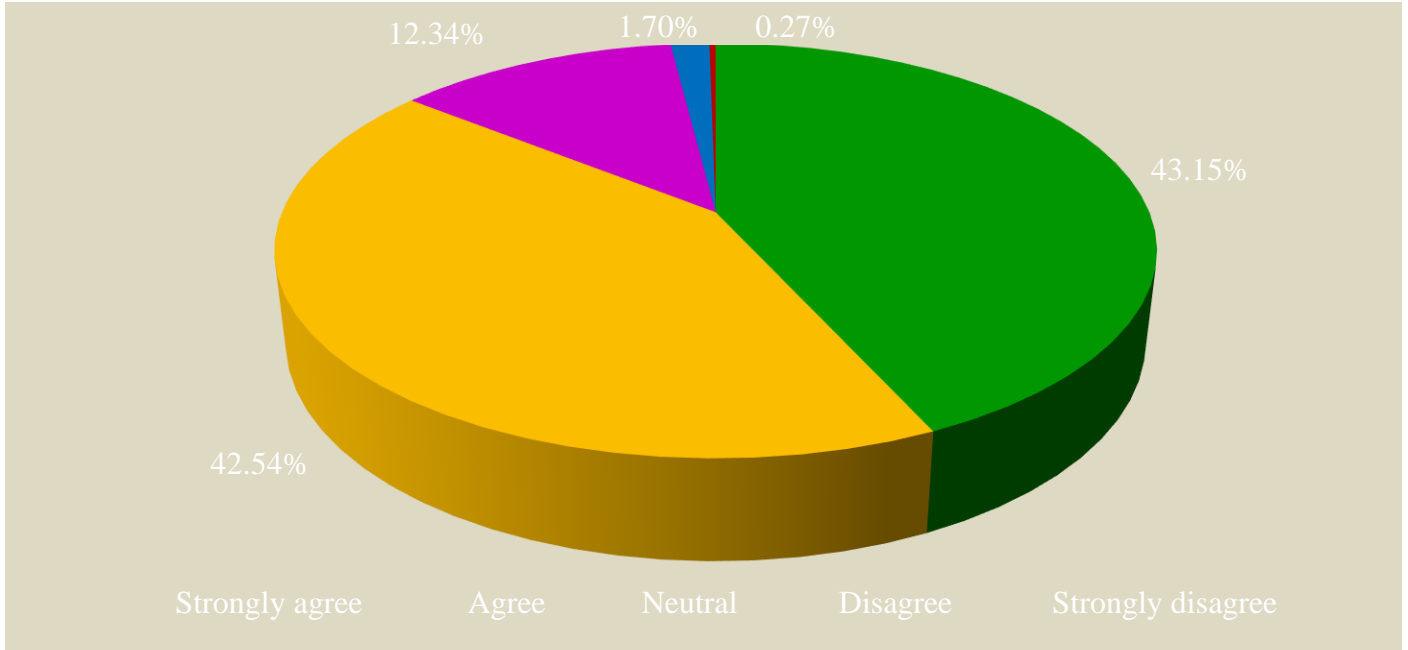
14. Teachers identify the weakness and helps to overcome

Every time	Usually	Occasionally / Sometimes	Rarely	Never
46.78%	36.52%	10.95%	3.86%	1.89%



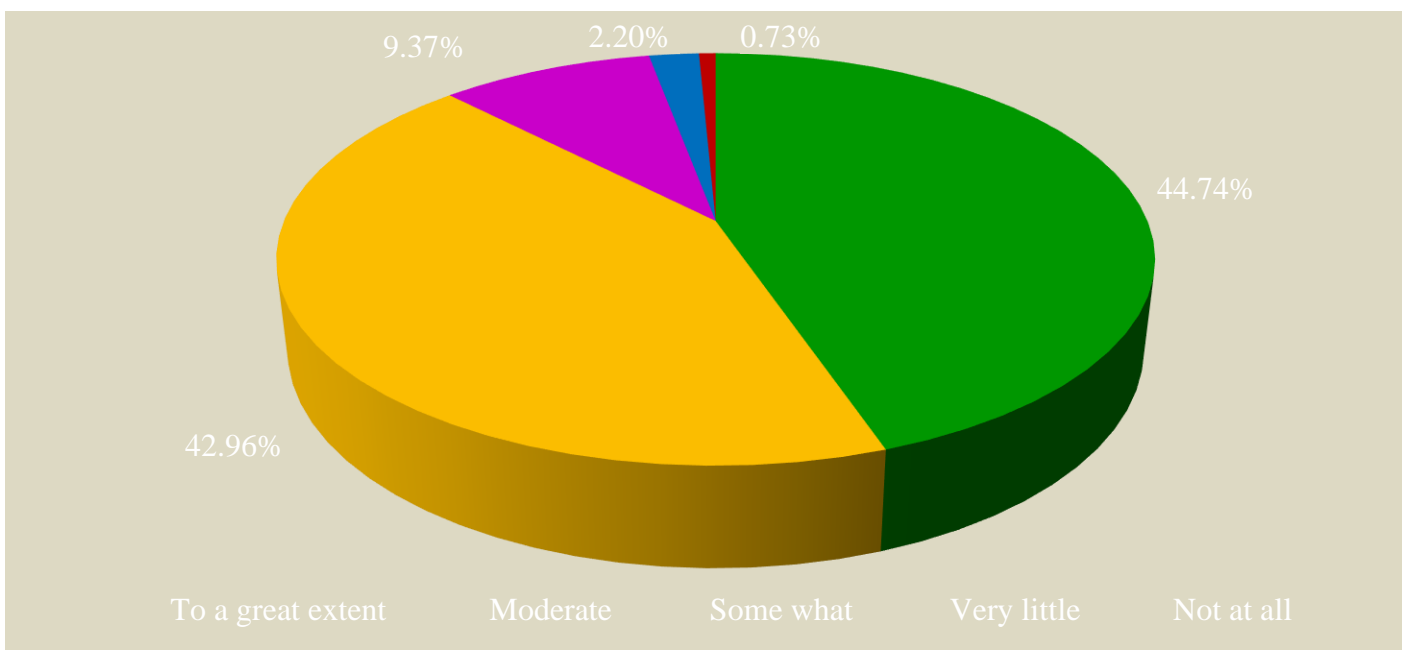
15. Monitor and review continuous quality improvement in Teaching learning process

Strongly agree	Agree	Neutral	Disagree	Strongly disagree
43.15%	42.54%	12.34%	1.70%	0.27%



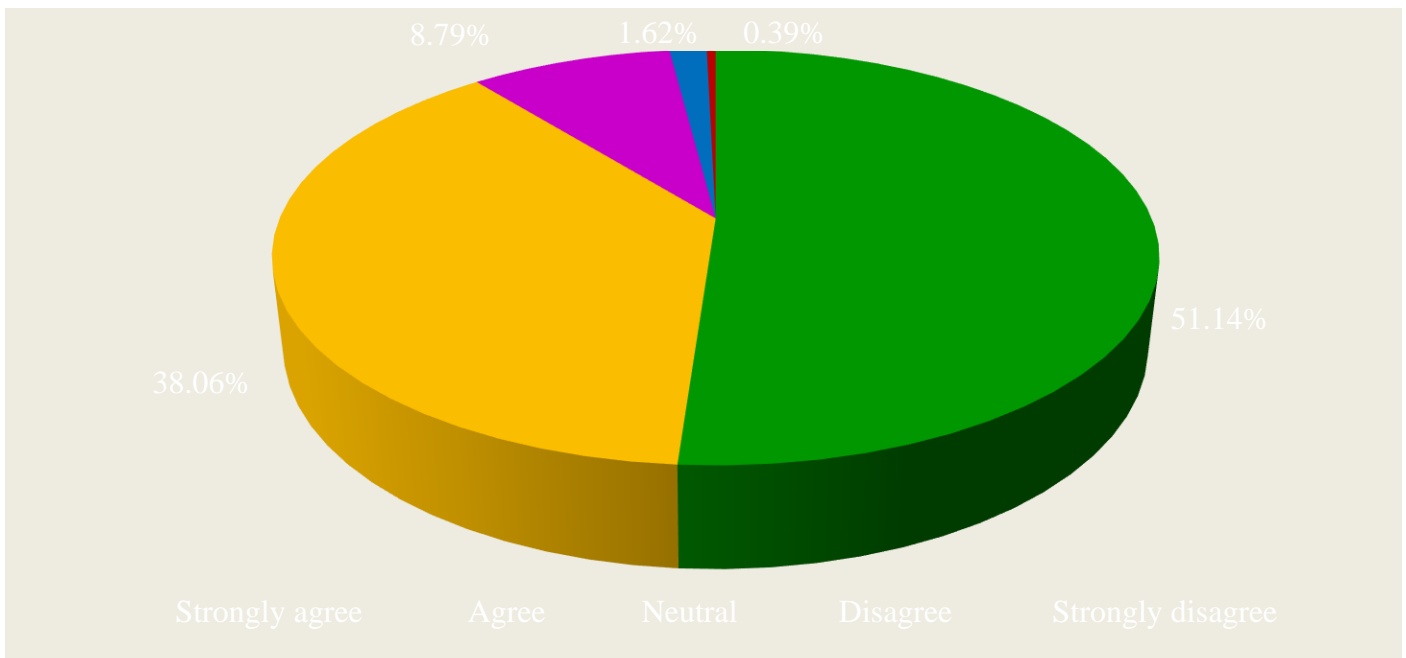
16. Student centric methods

To a great extent	Moderate	Some what	Very little	Not at all
44.74%	42.96%	9.37%	2.20%	0.73%



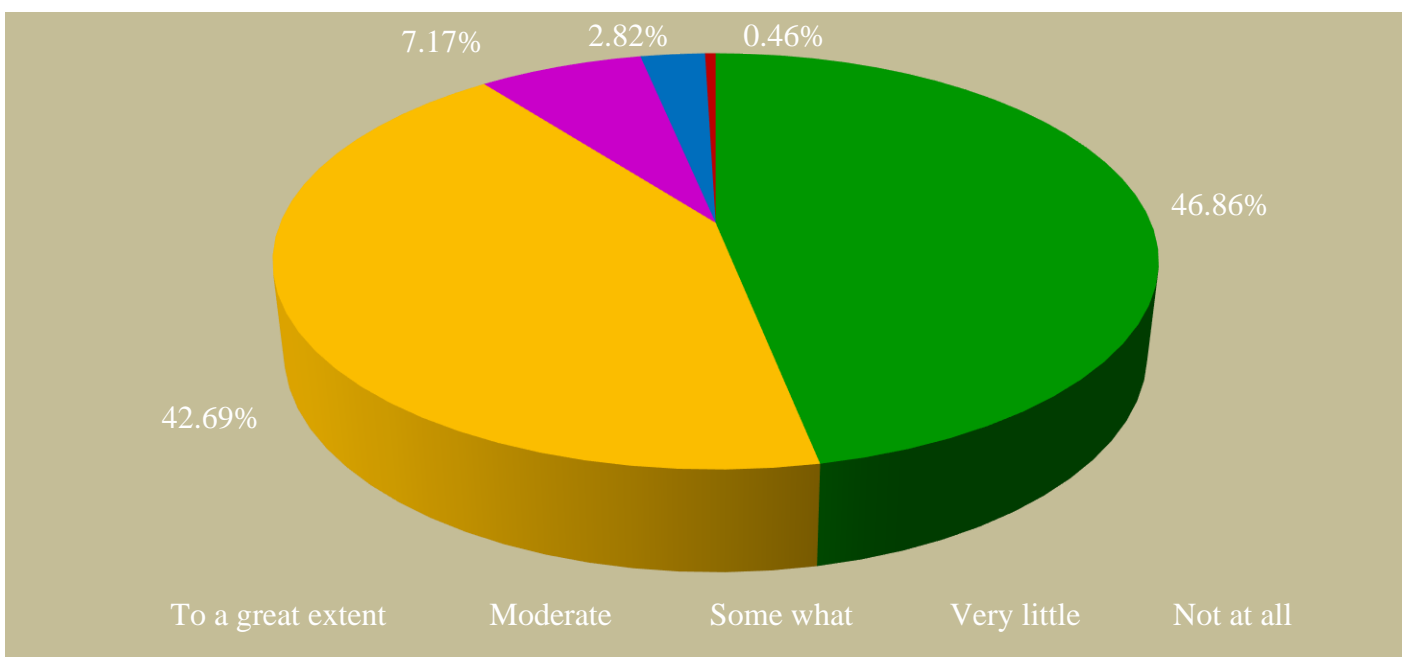
17. Teachers encourage to participate in extracurricular activities

Strongly agree	Agree	Neutral	Disagree	Strongly disagree
51.14%	38.06%	8.79%	1.62%	0.39%



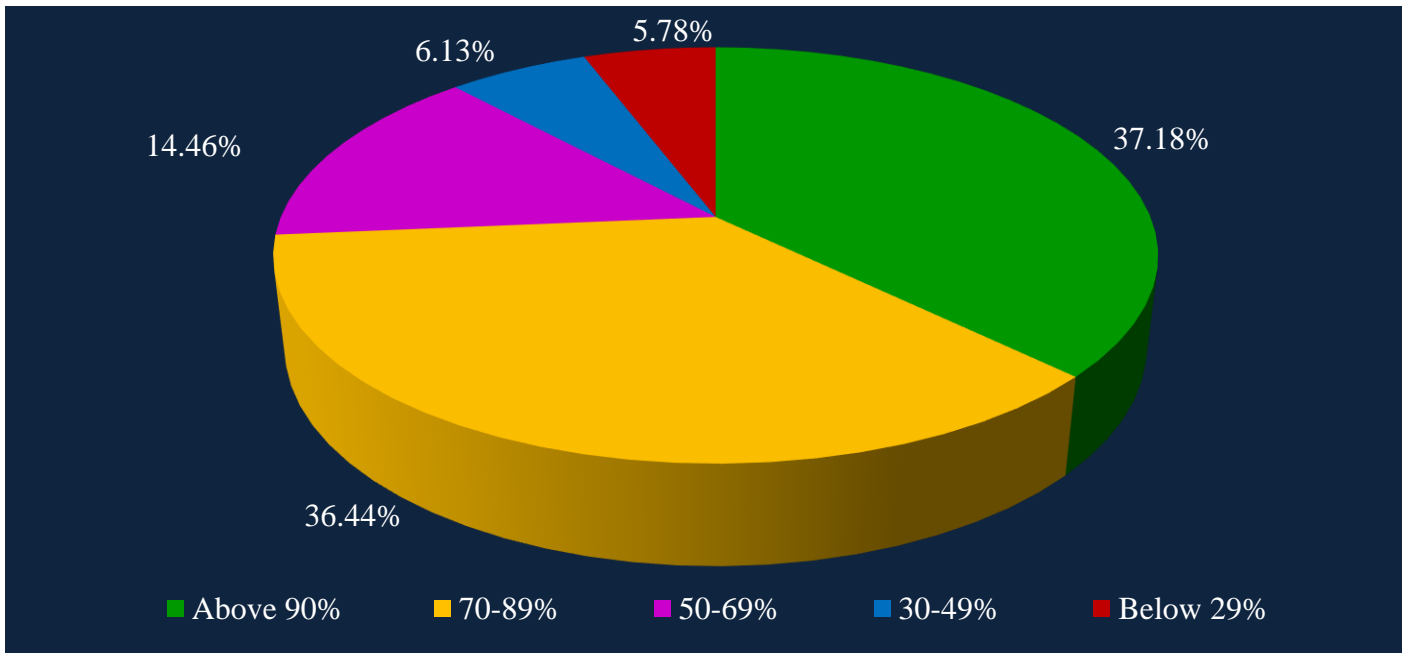
18. To inculcate soft skills, life skills and employability skills

To a great extent	Moderate	Some what	Very little	Not at all
46.86%	42.69%	7.17%	2.82%	0.46%



19. ICT enabled teaching

Above 90%	70-89%	50-69%	30-49%	Below 29%
37.18%	36.44%	14.46%	6.13%	5.78%



20. The overall quality of teaching-learning process

Strongly agree	Agree	Neutral	Disagree	Strongly disagree
47.98%	41.57%	9.02%	1.20%	0.23%

